

Flooding of the York River

1764 - 2011

By Andrew Patterson

The York River as it flows by Sunny Bank.
South of the river there are 3 levels.



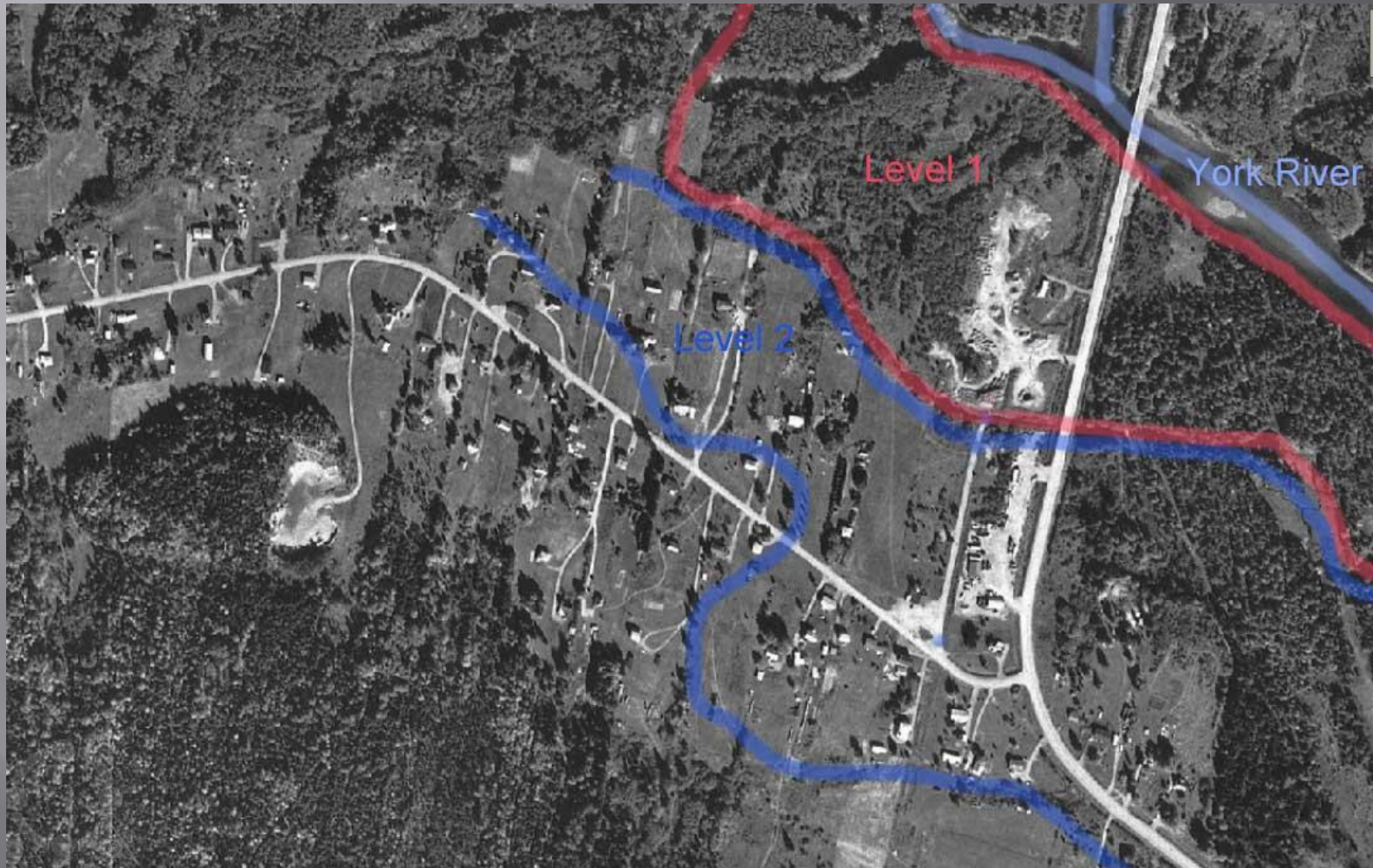
Level 1, referred to as the “Lowland,” is a section of land near the river which has flooded regularly for the past 250 years.



Floodwater which regularly covered level 1 simply continued its journey eastward to the Gaspé Bay, totally unobstructed.



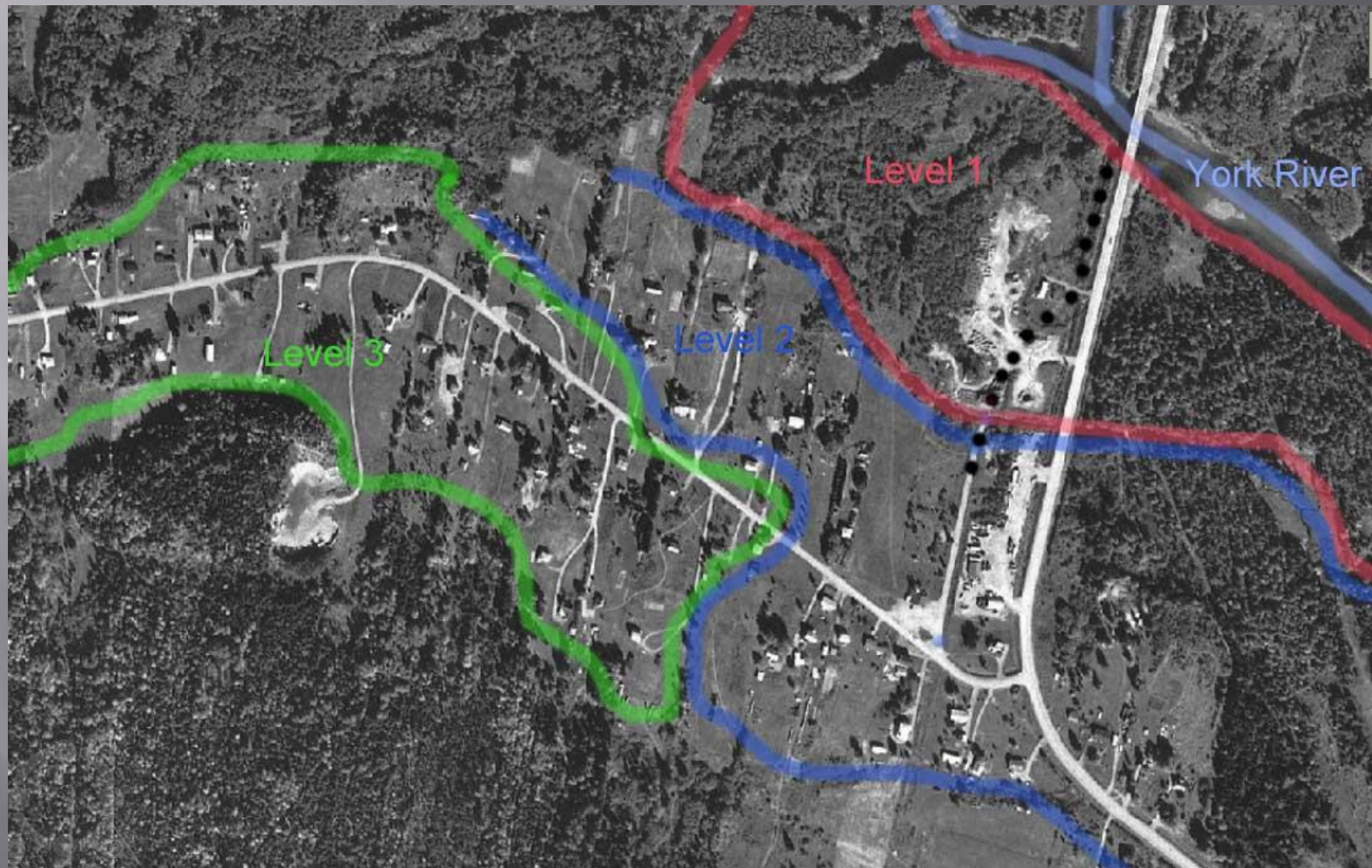
Most of the east end of Sunny Bank, called level 2, is about 2 to 3 metres higher in elevation than level 1



The elevation of Level 3 is higher still.



The original road to Wakeham was simply a trail at ground level which did not interfere with the flow of flood-water.



The second road, constructed in 1953, was raised by a few centimetres in level 2, but more than 2 metres as it crossed level 1.



This highway blocked flood-water from moving eastward on the lowland, causing minor flooding in the low areas of level 2. Water that did rise into the fields simply crossed over the second road, thus continuing to the Bay.



Flood
Of
1961



Finally in 1977 the present road was constructed, completely blocking floodwater from running eastward.

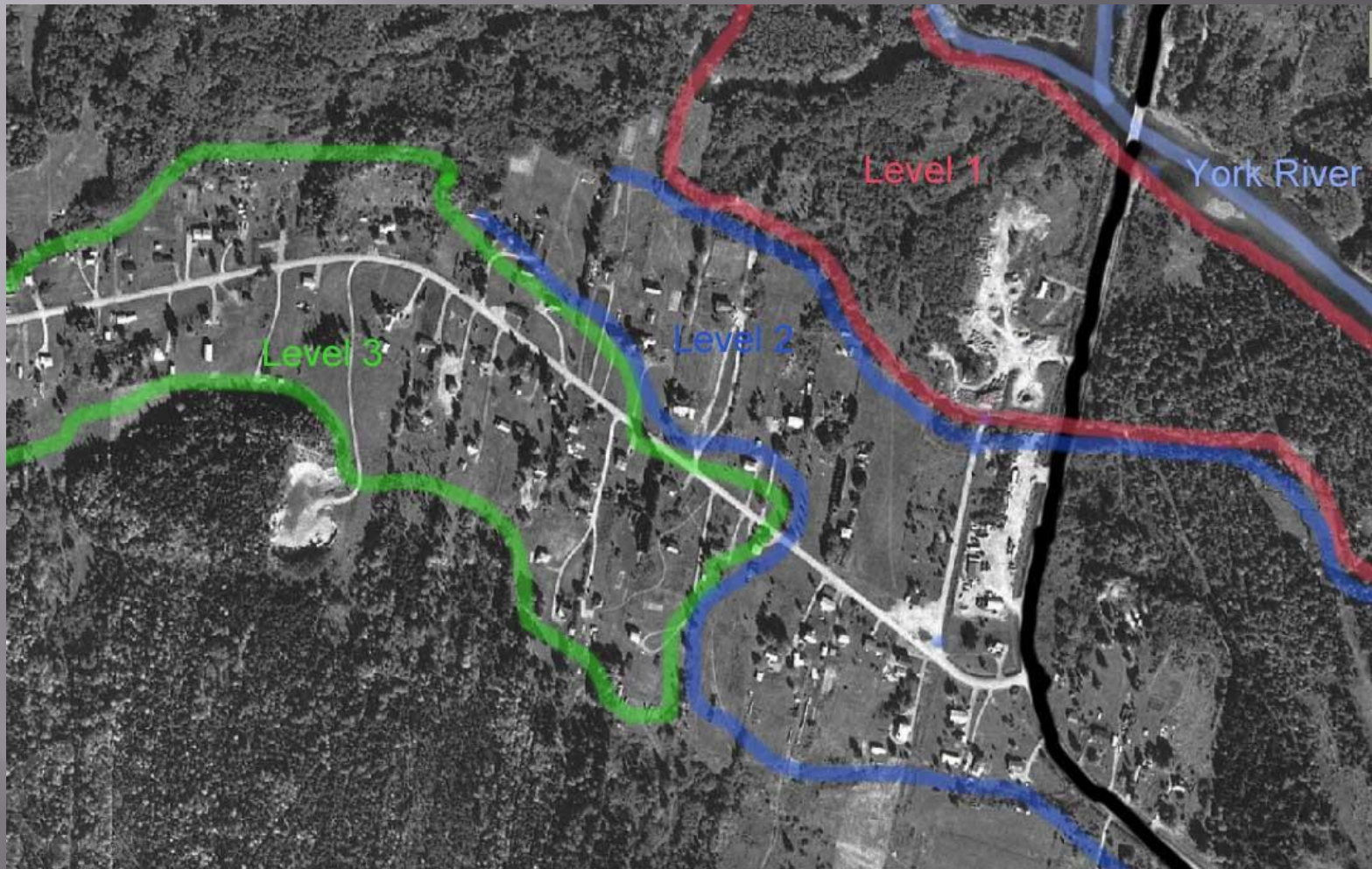
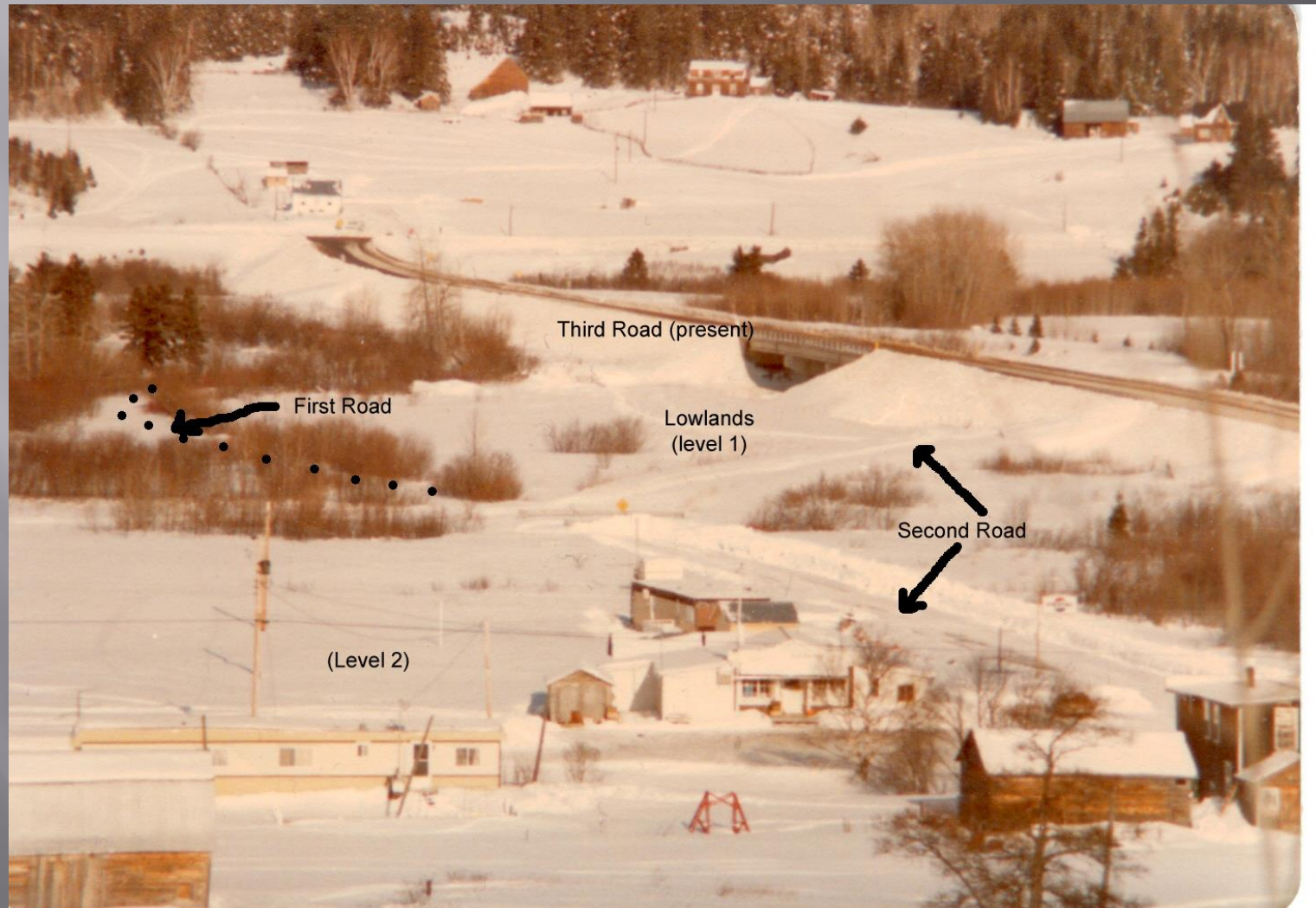


Photo showing 3 roads:



**In subsequent years
eleven floods occurred in
Level 2 with water levels
never seen prior to 1977.**



1981

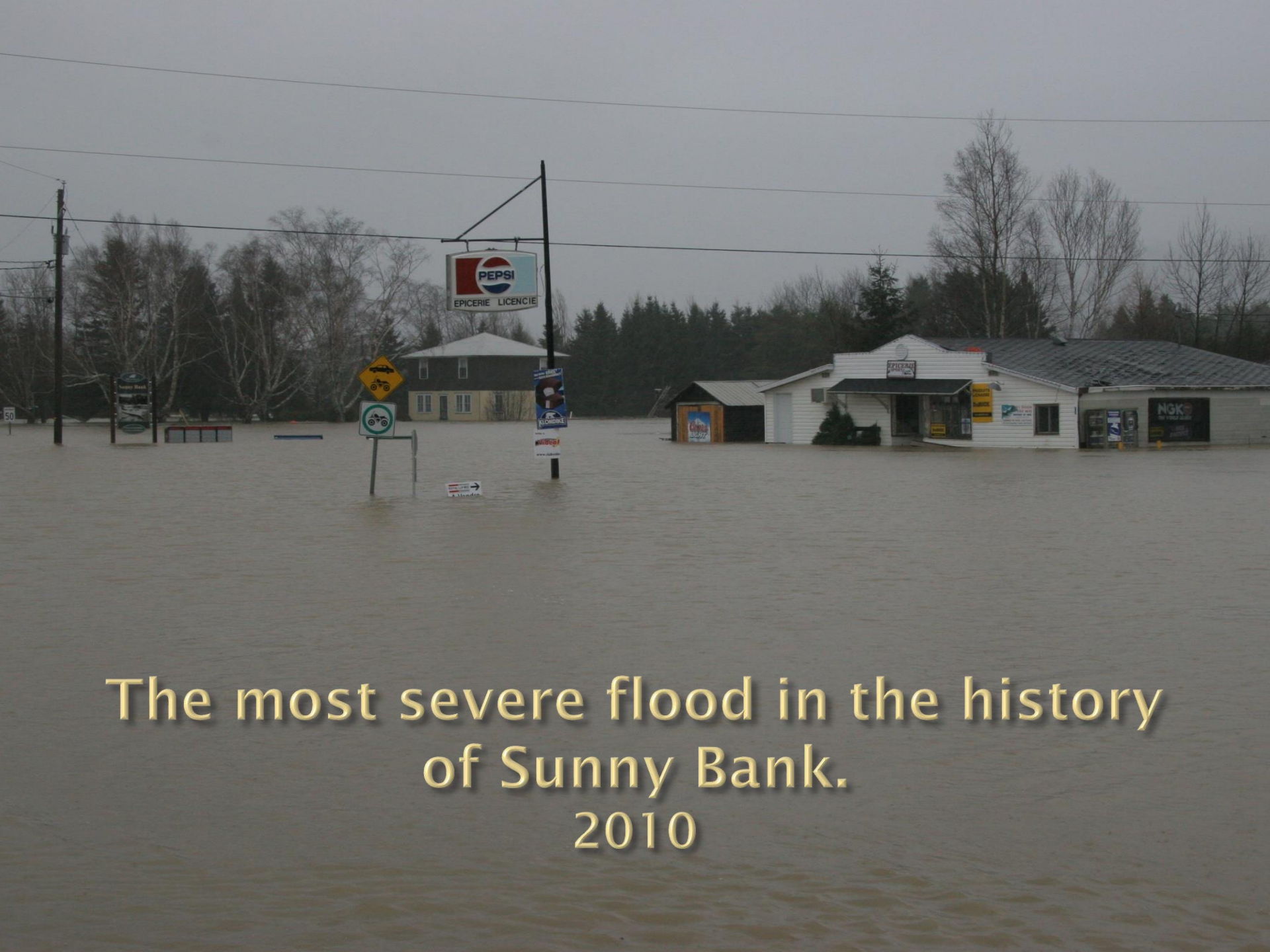


1983



2004

05.05.2004



The most severe flood in the history
of Sunny Bank.
2010



2010

This is the east side of the road
about 3 PM on Dec. 15, 2010



And this is the west side of the highway, same time.



2010-12-15 14:47

On Dec. 21, 2010 we engaged the surveyor, Christian Roy, to measure the difference in water level on the east and west side of the highway.



At 3 PM on Dec. 15, 2010 the water level was 80 cm (31.5 inches) higher on the west side of the highway than the east side.

Measured by Christian Roy
(surveyor)

Upon reaching maximum height, at 11 PM, the water was 1.28 m (50.4 inches) higher on the west, causing flooding to reach unprecedented levels.

